

# WGECON

## Working Group on Economics



Human Activities, Pressures and Impacts Steering Group (HAPISG)

## RESEARCH FOCUS

- Building fisheries economic capacity and links with international institutions
- Identifying and reporting on economic data-related needs and priorities for short and longer-term economic data collection, access, and analysis
- Demonstrating the approaches, methods, tools and information flow needed to provide fisheries management advice
- Assessing and reporting on economic aspects of commercial fishing and its management
- Coordinating the provision of economic indicators and analysis as part of integrated socio-ecological evaluations in support of EBFM.

## OUR OBJECTIVE

Bringing fisheries economics into ICES science and advice. Nations are concerned about fish stocks and marine ecosystems, not least because they can contribute to human wellbeing and have an economic value. This economic dimension should be an integral part of science and advice regarding the use and conservation of marine resources.

## OUR EXPERTISE

We explore topics such as: TAC setting systems, mixed fisheries management, area-based and spatial management, adjustment of capacity to resource potential, data-limited situations, shared stocks management, fishing rights allocation, sustainability of small-scale fisheries, links between catch sector and markets for fish, diversification of commercial fishing, fisheries-aquaculture connections, valuation of ecosystem service, etc.

## OUR CHAIRS



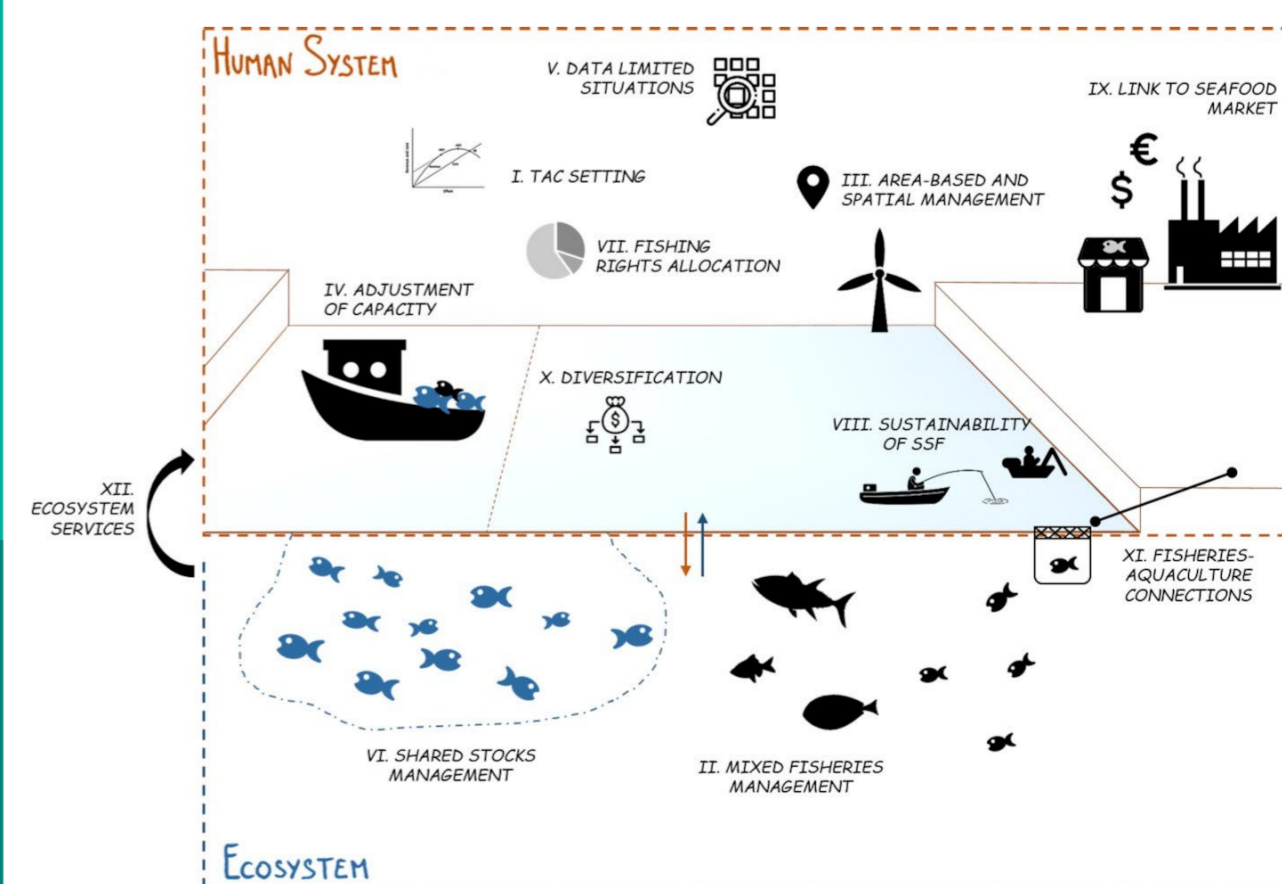
J. Rasmus  
Nielsen



Olivier  
Thébaud



Arina  
Motova-  
Surmava



Scan the QR code  
to learn more  
about our work



Scan the QR code  
to read our IJMS paper:  
reviews and future  
perspectives